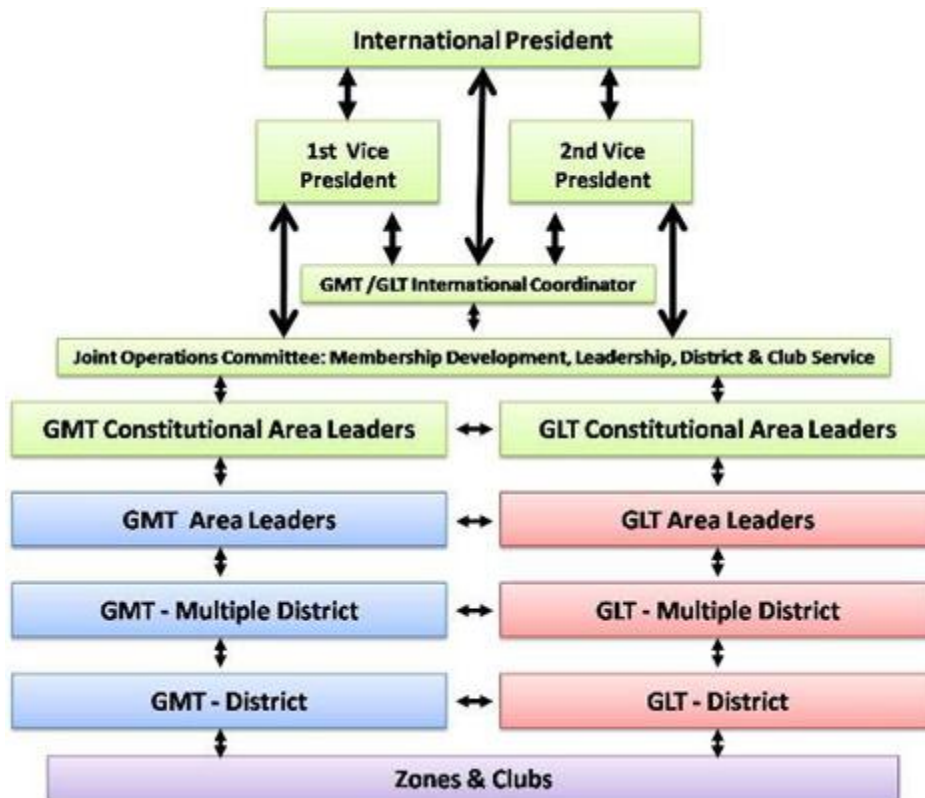


## GLT Structure

The Global Leadership Team consists of Lions leaders designated to serve specific constitutional or regional areas. GLT members are appointed for a three year term to allow for adequate analysis of area needs and development and implementation of appropriate programs. All GLT members are subject to annual review and confirmation of appointment or removal based on performance.



**GLT Constitutional Area Leaders:** Up to 11 GLT Constitutional Area Leaders including one for the continent of Africa, up to two for the USA, and up to three for OSEAL given the large size and unique needs of these areas. GLT and GMT have the same number of leaders with the same assigned territories, allowing for coordination and collaboration for maximum impact. In specific areas, one qualified Lion may serve as both the GLT and GMT representative. GLT Constitutional Area Leaders are appointed by the International President, in consultation with the First and Second Vice Presidents and area leadership.

**GLT Area Leaders:** Approximately 42 GLT Area Leaders worldwide. GLT has the same number of Area Leaders assigned to the same territory structure as their GMT counterparts. In specific areas, one qualified Lion may serve as both the GLT and GMT representative. Special Area Advisors may be added to support leadership efforts in remote or unique geographic regions. The Area Leaders representing both the GLT and GMT interact continuously to effectively address area needs. GLT Area Leaders are appointed by the International President, in consultation with the First and Second Vice Presidents and Constitutional Area Leaders.

**GLT - Multiple District:** Each multiple district has a GLT, comprised of a Multiple District GLT Coordinator, the Council Chairperson, and additional leadership development-minded Lions (3 maximum). The GLT-MD will work in cooperation with the GMT-MD. GLT Multiple District Coordinators and other team members are appointed by Council of Governors, in consultation with the GLT Area Leader and Council Chairperson.

**GLT - District:** Each district has a GLT, comprised of a District GLT Coordinator and the District Governor Team, with the Second Vice District Governor serving as liaison to the DG Team. Zone Chairpersons and Region Chairpersons were added to the District GMT and GLT in July 2013. Other qualified Lions may be added as necessary. The GLT-D will work in cooperation with the GMT-D (DG Teams are core members of both GLT and GMT at the district level). GLT District Coordinators and other team members are appointed by District Governor, in consultation with the GLT Area Leader, GLT Multiple District Coordinator (where applicable) and First and Second Vice District Governors.